

DETOUR MAP

STRUCTURE NO. 177-5001-0

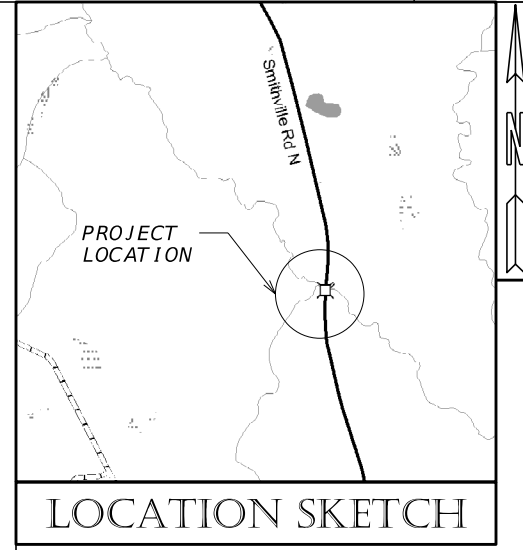
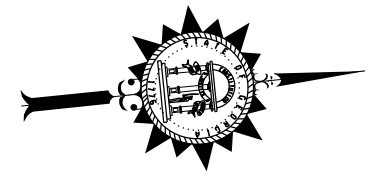
LEE COUNTY

CR 3 / SMITHVILLE ROAD OVER MUCKALOOCHEE CREEK

- Road Closure (0.2 mi)
- Open to Local Traffic (9.24 mi)
- Proposed Detour Route (14.41 mi)

DEPARTMENT OF TRANSPORTATION STATE OF GEORGIA

PLAN AND PROFILE OF PROPOSED BRIDGE REPLACEMENT FOR CR 3/ SMITHVILLE ROAD OVER MUCKALOCHEE CREEK SERIAL NO. 177-5001-0 - LEE COUNTY



DESIGN DATA:
 TRAFFIC A.D.T.: 340 (2023)
 TRAFFIC A.D.T.: 550 (2048)
 TRAFFIC D.H.V.:
 DIRECTIONAL DIST:
 % TRUCKS: 14
 24 HR. TRUCKS %:
 SPEED DESIGN: 55

LOCATION & DESIGN APPROVAL DATE: N/A

FUNCTIONAL CLASS:
LOCAL ROAD (RURAL)

THIS PROJECT IS 100% IN LEE COUNTY AND IS 100% IN CONG. DIST. NO. 002.

PROJECT DESIGNATION: EXEMPT

THIS PROJECT HAS BEEN PREPARED USING THE HORIZONTAL GEORGIA COORDINATE SYSTEM OF 1984 (NAD 1983/94 WEST ZONE, AND THE NORTH AMERICAN VERTICAL DATUM (NAVD) OF 1988.

PROJECT TO BE CONSTRUCTED AS PER GEORGIA DEPARTMENT OF TRANSPORTATION STANDARD SPECIFICATIONS, 2021 EDITION, AND ANY AND ALL SUPPLEMENTS TO THE 2021 GDOT SPECIFICATIONS AS APPROVED BY THE FEDERAL HIGHWAY ADMINISTRATION AND AS MODIFIED BY CONTRACT DOCUMENTS.

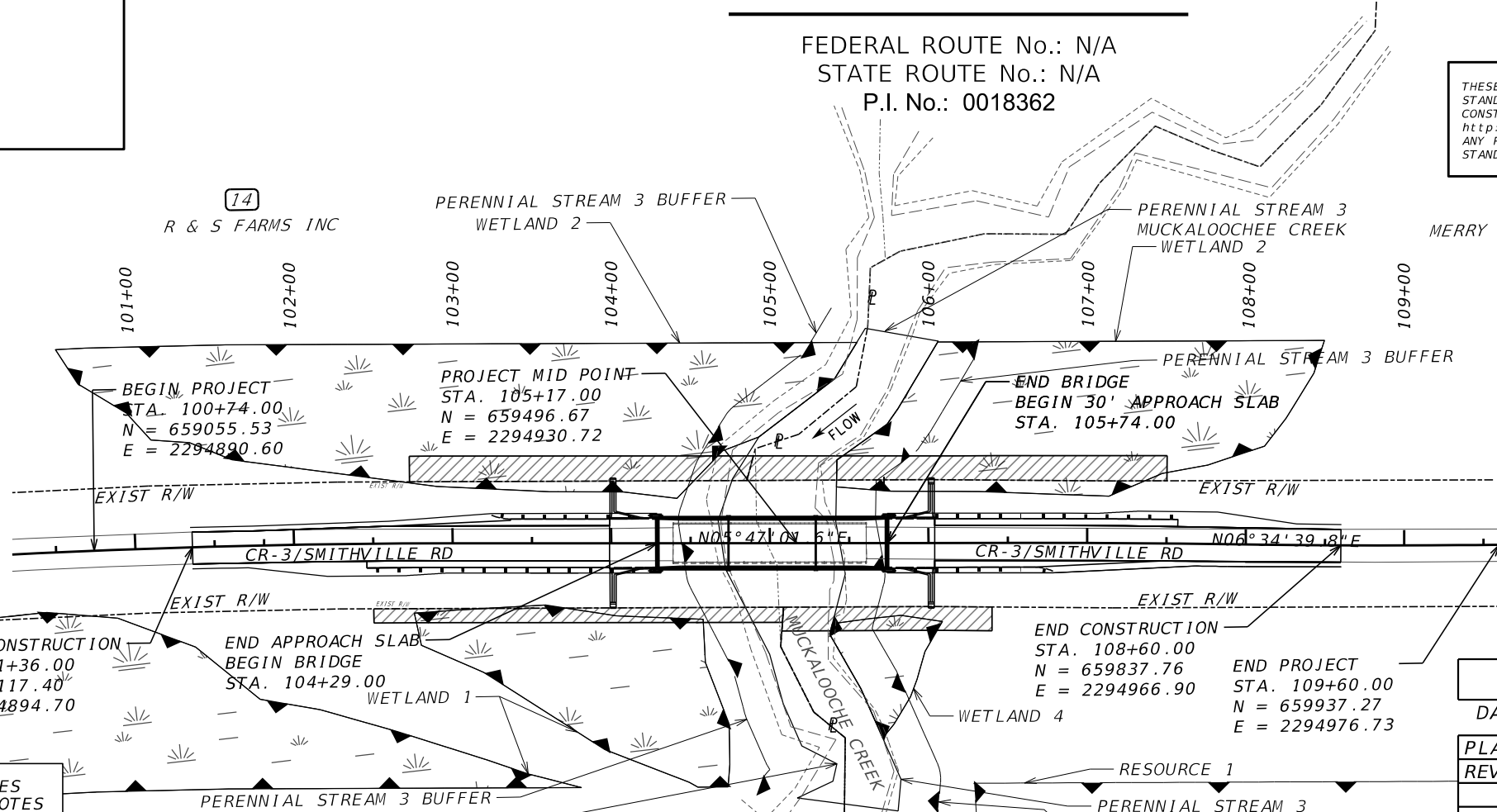
* ESA - SEE ENVIRONMENTAL RESOURCES IMPACT TABLE IN THE GENERAL NOTES FOR CONSTRUCTION RESTRICTIONS

TRAFFIC TO BE MAINTAINED DURING CONSTRUCTION VIA AN OFFSITE DETOUR.

THE DATA, TOGETHER WITH ALL OTHER INFORMATION SHOWN ON THESE PLANS OR IN ANYWAY INDICATED THEREBY, WHETHER BY DRAWINGS OR NOTES, OR IN ANY OTHER MANNER, ARE BASED UPON FIELD INVESTIGATIONS AND ARE BELIEVED TO BE INDICATIVE OF ACTUAL CONDITIONS. HOWEVER, THE SAME ARE SHOWN AS INFORMATION ONLY, ARE NOT GUARANTEED, AND DO NOT BIND THE DEPARTMENT OF TRANSPORTATION IN ANY WAY. THE ATTENTION OF BIDDER IS SPECIFICALLY DIRECTED TO SUBSECTIONS 102.04, 102.05, AND 104.03 OF THE SPECIFICATIONS.

NOTE:
ALL REFERENCES IN THIS DOCUMENT, WHICH INCLUDES ALL PAPERS, WRITINGS, DOCUMENTS, DRAWINGS, OR PHOTOGRAPHS USED, OR TO BE USED IN CONNECTION WITH THIS DOCUMENT, TO "STATE HIGHWAY DEPARTMENT OF GEORGIA", "STATE HIGHWAY DEPARTMENT", "GEORGIA STATE HIGHWAY DEPARTMENT", "HIGHWAY DEPARTMENT", OR "DEPARTMENT" WHEN THE CONTEXT THEREOF MEANS THE STATE HIGHWAY DEPARTMENT OF GEORGIA, AND SHALL BE DEEMED TO MEAN THE DEPARTMENT OF TRANSPORTATION.

THESE PLANS HAVE BEEN PREPARED IN ACCORDANCE WITH THE 2022 CONSTRUCTION STANDARDS AND DETAILS BOOK AND ATTACHED APPLICABLE REVISIONS. THE CONSTRUCTION STANDARDS AND DETAILS BOOK IS AVAILABLE AT: <http://mydocs.dot.ga.gov/info/gdotpubs/ConstructionStandardsAndDetails/Forms/AllItems.aspx> ANY REVISIONS CONTAINED WITHIN THIS PLAN SET SUPERSEDE THE 2022 CONSTRUCTION STANDARDS AND DETAILS BOOK WHICH THEY REVISE OR IN WHICH THERE IS A CONFLICT.



MERRY L LTD C/O SUSAN PLYLER



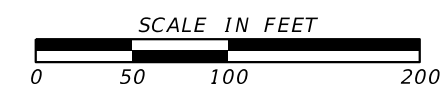
PLANS PREPARED BY: **NEEL-SCHAFFER**
DESIGN

RECOMMENDED FOR SUBMISSION BY: OFFICE OF ALTERNATIVE DELIVERY

LENGTH OF PROJECT	
	MILES
NET LENGTH OF ROADWAY	0.1403
NET LENGTH OF BRIDGES	0.0275
NET LENGTH OF PROJECT	0.1678
NET LENGTH OF EXCEPTIONS	0.0000
GROSS LENGTH OF PROJECT	0.1678

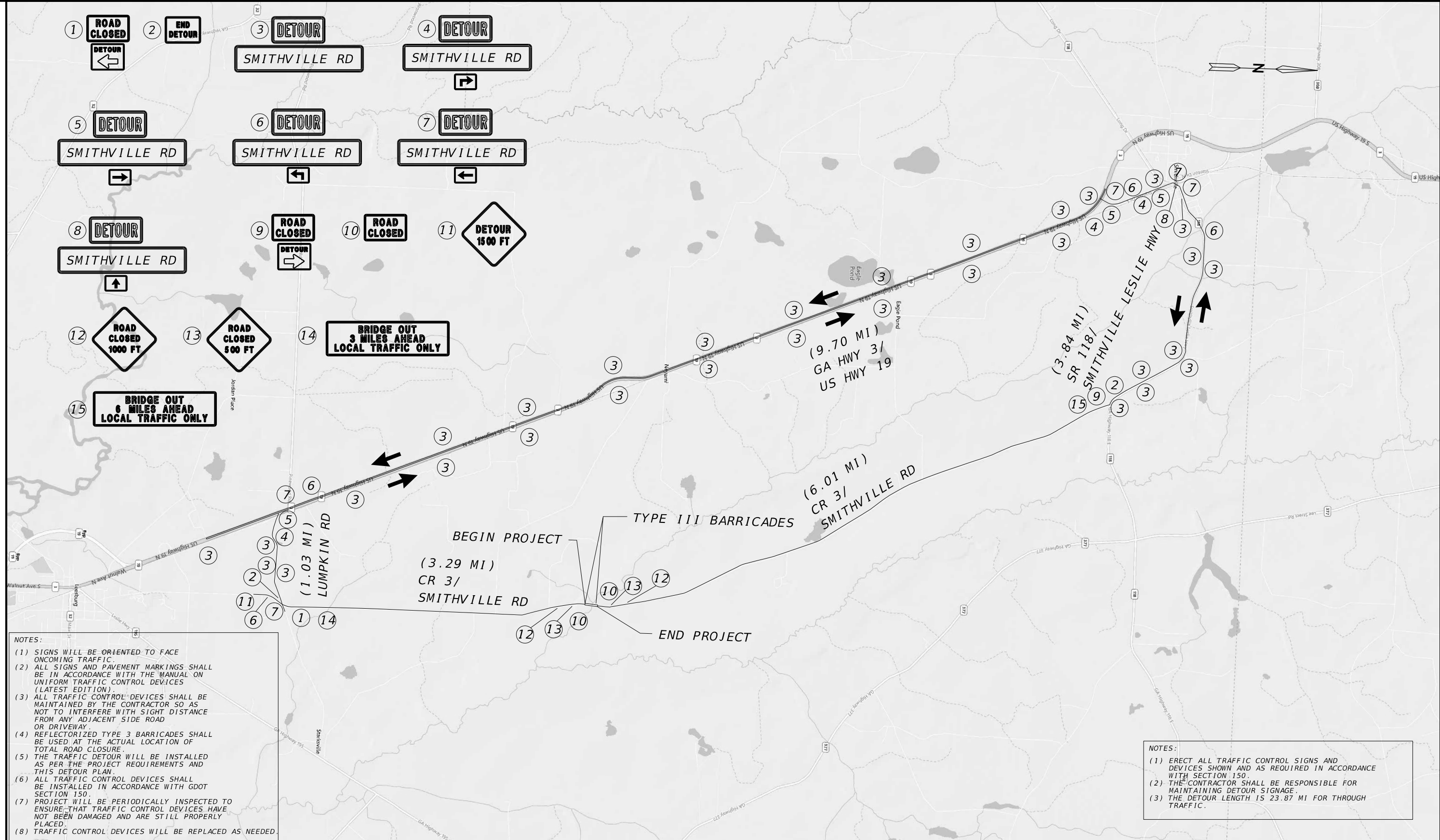
LEE COUNTY No. 177
BRIDGE SERIAL NO. 177-5001-0

MOORE BOYS FARM LLC
SMITHVILLE ROAD N



DATE	CHIEF ENGINEER
PLANS COMPLETED	- -
REVISIONS	

DRAWING No.
01-0001LEE1



NOTES:

- (1) SIGNS WILL BE ORIENTED TO FACE ONCOMING TRAFFIC.
- (2) ALL SIGNS AND PAVEMENT MARKINGS SHALL BE IN ACCORDANCE WITH THE MANUAL ON UNIFORM TRAFFIC CONTROL DEVICES (LATEST EDITION).
- (3) ALL TRAFFIC CONTROL DEVICES SHALL BE MAINTAINED BY THE CONTRACTOR SO AS NOT TO INTERFERE WITH SIGHT DISTANCE FROM ANY ADJACENT SIDE ROAD OR DRIVEWAY.
- (4) REFLECTORIZED TYPE 3 BARRICADES SHALL BE USED AT THE ACTUAL LOCATION OF TOTAL ROAD CLOSURE.
- (5) THE TRAFFIC DETOUR WILL BE INSTALLED AS PER THE PROJECT REQUIREMENTS AND THIS DETOUR PLAN.
- (6) ALL TRAFFIC CONTROL DEVICES SHALL BE INSTALLED IN ACCORDANCE WITH GDOT SECTION 150.
- (7) PROJECT WILL BE PERIODICALLY INSPECTED TO ENSURE THAT TRAFFIC CONTROL DEVICES HAVE NOT BEEN DAMAGED AND ARE STILL PROPERLY PLACED.
- (8) TRAFFIC CONTROL DEVICES WILL BE REPLACED AS NEEDED.

NOTES:

- (1) ERECT ALL TRAFFIC CONTROL SIGNS AND DEVICES SHOWN AND AS REQUIRED IN ACCORDANCE WITH SECTION 150.
- (2) THE CONTRACTOR SHALL BE RESPONSIBLE FOR MAINTAINING DETOUR SIGNAGE.
- (3) THE DETOUR LENGTH IS 23.87 MI FOR THROUGH TRAFFIC.

BRIDGE SERIAL NO. 177-5001-0



REVISION DATES

NO.	DATE	DESCRIPTION

CORRIDOR LOCATION MAP
CR 3 / SMITHVILLE ROAD
OVER MUCKALOOCHEE CREEK
LEE COUNTY
BRIDGE SERIAL NO. 177-5001-0

CHECKED:	DATE:	DRAWING No.
BACKCHECKED:	DATE:	12-0001LEE
CORRECTED:	DATE:	
VERIFIED:	DATE:	